



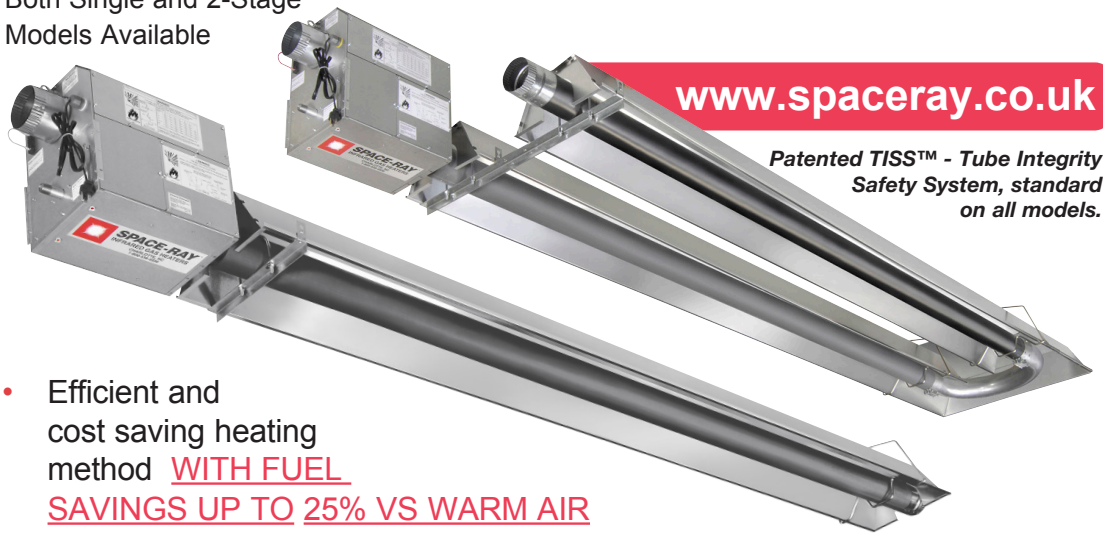
# SPACE-RAY®

## EPA Radiant Tube Push Burner Series

### EcoDesign compliant

Model ratings 12kW to 55kW. Also available in IP55

Both Single and 2-Stage Models Available



[www.spaceray.co.uk](http://www.spaceray.co.uk)

Patented TISS™ - Tube Integrity Safety System, standard on all models.

- Efficient and cost saving heating method WITH FUEL SAVINGS UP TO 25% VS WARM AIR
- Eight model ratings: 12kW to 55kW available in Linear and 'U' models
- Single Stage and Two Stage Modulating Inputs available
- Push Through System (Positive Pressure)
- Heat treated Aluminized Calorized steel tubes for improved emissivity and a flake free work environment.
- Also available in an IP55 model with a stainless steel control box for harsh work environments
- Aluminium reflectors – a tested and proven superior material – designed to maximise downward radiation
- Fan motor totally enclosed in the burner box. Ideal for applications where Minimal noise (less than 50dB) is desired

**TISS™**  
**Tube Integrity Safety System**

In the unlikely event of a tube failure, TISS™ has been designed to automatically shut-off the heater, providing greater safety and piece of mind.

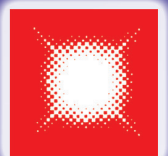
**How It Works**  
A low voltage circuit continuously monitors the clearance above the reflector for excessive overheat and tube integrity compromise. If that should ever happen, the safety circuit is broken and shuts down the gas controls.

You may never know it is there, but on a positive pressure tube heater it is nice to know you have the TISS.

U.S. Patent# 8000075



# SPACE-RAY® Heating Systems





# SPACE-RAY

### SPECIFICATION GUIDE - EPA - SERIES EcoDesign COMPLIANT

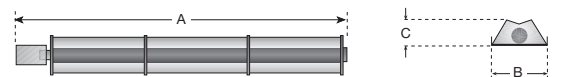
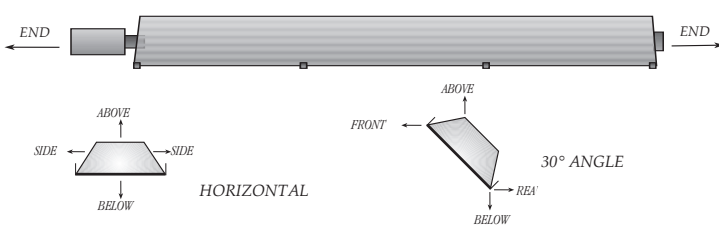
Model No.	EPA 12	EPA 15	EPA 20	EPA 25	EPA 30	EPA 38	EPA 45	EPA 55
Heat Input, kW Hs	11.50	14.00	20.00	25.00	30.00	36.60	45.00	53.00
Min. kW Hs-2 stage	7.30	9.70	14.00	17.00	20.05	25.60	30.80	37.10
Heat Input, kW Hi	10.35	12.60	18.00	22.50	27.00	33.00	40.50	47.70
Min. kW Hi-2 stage	6.57	8.70	12.60	15.30	18.05	23.00	27.70	33.40
Weight	refer to installation manual							
Length m - A - EPA U	3.79	3.79-6.84			5.31-6.84	5.31-9.88	6.84-9.88	8.36-11.41
Length m - A - EPA L	4.93-6.46	6.46-12.55		9.5-12.55		12.55-18.65		15.6-21.7
Width mm - B - EPA U	790							
Width mm - B - EPA L	330							
Height mm - C	370							
Gas Connection	R - 1/2							
Supply Pressure	Natural Gas - G20 20mbar Propane - G31 37mbar							
Electrical Supply	230v~50Hz 90W, Current rating 0.39A, fuse externally 3A							
Flue Diameter	100mm Dia.							
Air Inlet Connection	101.6mm Dia.							
NO x class	2	2	3	3	3	1	3	2

### RECOMMENDED MOUNTING HEIGHT RANGE (General guidance only)

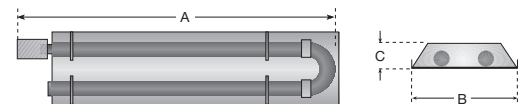
Model No.	EPA 12	EPA 15	EPA 20	EPA 25	EPA 30	EPA 38	EPA 45	EPA 55
Horizontal m	2.4 - 6.0		3.0 - 8.0		3.8 - 10.0	4.0 - 12.5	5.6 - 15.0	6.0 - 15.0
Angled > 30° m	2.1 - 4.5		2.7 - 5.0		3.3 - 7.0	3.7 - 8.0	4.8 - 11.0	5.2 - 11.0

### MINIMUM CLEARANCES TO COMBUSTIBLE MATERIAL - MM

Model No.	EPA 12	EPA 15	EPA 20	EPA 25	EPA 30	EPA 38	EPA 45	EPA 55
SIDE	560		710		860		1060	
ABOVE	150							
BELOW	1320	1420	1520		1780	1930	2060	2180
END	380				510			
FRONT	1020	1220	1320		1470	1680	1780	1910
REAR	300							



EPA L series



EPA U series



# SPACE-RAY®

For more information contact:

Distributor/Agent:

Gas Fired Products (UK) Ltd, Chapel Lane, Claydon, Ipswich, Suffolk IP6 0JL UK  
Telephone: (01473) 830551 Fax: (01473) 832055 Email: info@spaceray.co.uk Website: www.spaceray.co.uk

We reserve the right to alter specifications without prior notice.

**FACTORIES: ■ IPSWICH, ENGLAND ■ CHARLOTTE, N.C., U.S.A.**